

School Profile 2008-2009

Mission Statement:

Lutheran High School North is a diverse educational community whose unity is in Jesus Christ. We exist to nurture young Christians for further education and Christian service.

Lutheran North is a parochial school operated by an Association of Lutheran Congregations in the metropolitan St. Louis region. North Central Association of Colleges and Secondary Schools accredits the school. Lutheran North has been recognized as a Blue Ribbon School by the U.S. Department of Education. Twice the Lutheran Church Missouri Synod also named the school an "Exemplary" Lutheran High School.

Calendar

- 2 Semesters 178 days
- 8 Block Alternating Day Schedule
- 4 – 90 minute periods each day

School

- Grades: 9 – 12
- Total Enrollment: 385
- Size of Senior Class: 88
- ACT/CEEB code 262.985

Faculty (85% Advanced Degrees)

- 22 Full-time teaching faculty
- 8 Part-time teaching faculty
- 2 Counselors
- 3 Administrators
- 1 Media and Technology Coordinator
- 1 Admissions Director

Graduation Requirements

- Credits Required: 27
- English – 4 credits
- Social Studies – 3 credits (One in American History)
- Science – 3 credits (All are lab sciences)
- Mathematics – 3 credits
- Fine Arts – 1 credit
- Practical Arts – 1 credit
- Health – .5 credit
- Theology – .5 credit (For each year in attendance)
- P.E. – 1.5 credits
- Elective – 8 credits

GPA

All grades for attempted courses are used in the computation of the grade point average. A four-point scale using pluses and minuses is used. Grades are not weighted.

Grading System

A = 4 A- = 3.67 B+ = 3.33 B = 3
B- = 2.67 C+ = 2.33 C = 2 C- = 1.67
D+ = 1.33 D = 1 D- = .67 F = 0
X = 0 (Credit Granted)
S = Passing for ability but not included in calculating GPA

Ranking

Lutheran High School North does not rank its students due to the school's size and academically competitive curriculum.

Honors Courses

Advanced College Credit (ACC) available through Saint Louis University in the following honors/AP classes:

Language Arts

ACC Strategies in Rhetoric and Research
ACC American Literature
AP English Literature I (ACC Introduction to Poetry)
AP English Literature II (ACC Drama Literature)

Social Studies

AP United States History to 1865
AP United States History from 1865 to the Present

Mathematics

AP Calculus AB

Foreign Language

ACC Spanish III & IV

Service Learning

The Crusader Saved to Serve program requires 60 hours of community service from each student. The Faith In Action program provides coordinated days of student and faculty community service each year.

School Technology

Internet and academic databases available building wide. Wireless network and wireless internet access throughout the building. Emphasis on technology integration into all areas of the curriculum.

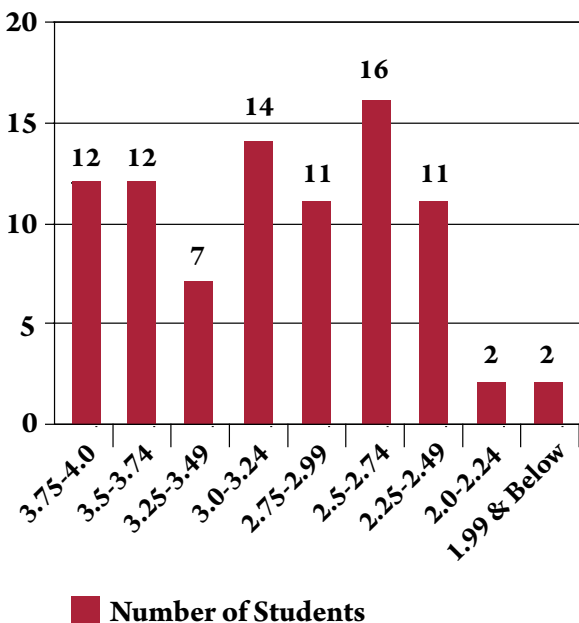
Class of 2008 Data (number of graduates 86)

92% Universities and Four Year Colleges
 6% Two Year Colleges
 National Achievement Finalist and
 Scholarship Recipient 1
 National Merit Commended Student 3

ACT Results for the Class of 2008:

Average composite score of the top 10% 30
 Average composite score of the top 25% 27
 Average composite of the top 50% 26
 National average 21

Class of 2008 Grade Distribution:



Curriculum:

Language Arts

Freshman English#
 Sophomore English#
 Strategies in Rhetoric and
 Research
 ACC Strategies in Rhetoric
 and Research*
 American Literature
 ACC American Literature*
 English Literature I & II
 AP English Literature
 I* & II*
 English Symposium I & II
 Speech
 Drama
 Journalism

Modern Languages

French I, II, III, & IV
 Spanish I, II, III*, & IV*

Social Studies

World History and
 Geography I & II
 American History
 Introduction to
 Economics
 AP United States History
 to 1865*
 AP United States History
 1865 to Present*
 Political Science
 American Government
 Psychology
 Contemporary
 World Geography

Mathematics

Algebra I
 Geometry
 Data Analysis
 Algebra II
 Algebra II and Trigonometry
 Basic Statistics
 Finite Mathematics
 Precalculus
 AP Calculus AB*

Science

Biology
 Principles of Chemistry
 Chemistry
 Principles of Physics
 Advanced Biology
 Organic Chemistry
 Human Anatomy and
 Physiology
 Physics

Fine Arts

Art 1-A
 Art 1-B
 Ceramics
 Drawing
 Design
 Painting/Printing
 Intermediate Band
 Concert Band
 Chorale
 Concert Choir

Practical Arts

Computer Applications I & II
 Multimedia Presentations
 Introduction to Business
 and Personal Finance
 Accounting I & II
 Business Law
 Business Management
 and Entrepreneurship
 Marketing
 Office Procedures
 Publications (Yearbook)
 Foods I & II
 Child Development
 Fashion

Physical Education

General Health
 Boys Physical Education
 I & II
 Girls Physical Education
 I & II
 Physical Education III

Theology

Old Testament
 New Testament
 The Church in Word &
 Practice
 Seminar in Christian Living

Academic Alternatives

Dual enrollment at local
 University or Jr. College and
 County Technical School
 Resource Room
 Study Skills

*College credits available through
 Saint Louis University
 1-8-1-8 Program

Honors option available as of
 2007-2008

Extra-curricular Opportunities

Sports:

Boys:

Football	Cross Country	Soccer
Golf	Basketball	Baseball
Track and Field		

Girls:

Volleyball	Cross Country	Softball
Tennis	Basketball	Dance Cru
Soccer	Track and Field	
Cheerleading (Football and Basketball)		

Student Groups:

Student Council
Math Team
Peer Ministry
Gospel Choir
Student Ambassadors
Chess Club
World Cultures Club
International Thespian Society (ITS)
Fellowship of Christian Athletes (FCA)
Future Business Leaders of America (FBLA)
HISTEP (High School Taught Education Program)
TREND (Turning Resources and Energy in New Directions)

Administration

Timothy Hipenbecker – Principal
William Lucas – Dean of Students
Troy Fehrs – Director of Admissions and Recruitment
Tim Brackman – Registrar
Michael Russell – Athletic Director
Elaine Hunt – Director of Student Activities
Cindy Burreson – Director of Counseling
Rev. Darin Keener – Campus Pastor
Mike Kratzer – Media and Technology Coordinator
Kevin Ballentine – Major Gifts Officer

College Acceptance Data for Classes of 2004-2008

NACAC—Lutheran High School North is a member of the National Association for College Admission Counseling and complies with its Statement of Principles of Good Practice.

Abilene Christian University
Academy of Art-San Francisco
Alabama A&M University
Alabama State University
Alcorn State University
Allied Medical College
Arkansas State University
Art Institute of Chicago
Art Institute of Pittsburgh
Augsburg College
Avila University
Baker University
Ball State University
Baylor University
Belhaven College
Bellarmine University
Benedict College
Bethany College
Bethune-Cookman College
Bradley University
Buena Vista University
Butler University
California Lutheran University
Capital University
Carleton College
Carthage College
Case Western Reserve University
Central Bible College
Central Methodist University
Central Missouri State University
Chamberlain School of Nursing
Chaminade University-Honolulu
Chicago State University
Claflin University
Clark Atlanta University
Clemson University
Clifton University
College of the Ozarks
Colorado State University
Columbia College-Chicago
Columbia University
Concordia University-Mequon
Concordia University-Chicago
Concordia University-Selma
Concordia University-Seward
Concordia University-St. Paul
Culver-Stockton College
Dana College
De Paul University
DePauw University
Dillard University
Drake University
Drury University
Duke University

continued on next page...

College Acceptance Data for Classes of 2004-2008 (continued)

Elmhurst College	Missouri College	Syracuse University
Elon University	Missouri Southern State University	Tennessee State University
Fisk University	Missouri State University	Texas Christian University
Florida A&M University	Missouri University of Science & Technology	Texas Southern University
Fontbonne University	Missouri Valley College	Trevecca Nazarene University
Fordham University	Missouri Western State College	Trinity University
Furman University	Morehouse College	Truman State University
Gettysburg College	Morgan State University	Tulane University
Grinnell College	Murray State University	Tulsa University
Gustavus Adolphus College	New Mexico Military Institute	Tuskegee University
Hampton University	North Carolina A & T	Union University
Harris-Stowe State College	North Carolina State University	University of Arkansas-Fayetteville
Harris-Stowe State University	North Central College	University of Arkansas-Little Rock
Hickey College of Business	North Park University	University of Arkansas-Pine Bluff
Howard University	Northwest Missouri State University	University of Central Missouri
Illinois College	Northwestern University	University of Central Oklahoma
Illinois Institute of Art-Schaumburg	Oakwood College	University of Evansville
Illinois Institute of Technology	Ohio State University	University of Illinois-Chicago
Illinois Wesleyan University	Olivet Nazarene University	University of Indianapolis
Indiana State Purdue University	Otterbein College	University of Iowa
Indiana State University	Paine University	University of Kansas
Indiana Tech	Penn State University	University of Kentucky
Iowa State University	Pittsburgh State University	University of Memphis
Iowa Wesleyan University	Prairie View A&M University	University of Michigan- Ann Arbor
Jackson State University	Purdue University	University of Minnesota
Johns Hopkins University	Quincy University	University of Missouri-Columbia
Kansas City Art Institute	Ranken Technical College	University of Missouri-Kansas City
Kansas State University	Reed College	University of Missouri-Rolla
Kaskaskia College	Rhodes College	University of Missouri-St Louis
Kentucky State University	Robert Morris College-Chicago	University of New Haven
Kettering University	Rockhurst University	University of Notre Dame
Langston University	Roosevelt University	University of Southern Indiana
Lincoln University	Rose-Hulman Institute of Technology	University of Southern Mississippi
Lindenwood University	Rust College	University of Virginia
Livingstone College	Saint Louis University	Valparaiso University
Louisiana State University-Baton Rouge	Savannah State University	Vanderbilt University
Loyola University	Seton Hall University	Vatterott College of Cosmetology
Luther College	Simmons College	Virginia State University
Lyon College	Smith College	Virginia Wesleyan College
MacMurray College	Southeast Missouri State University	Wartburg College
Mansfield University	Southern Illinois University-Carbondale	Washburn University
Marquette University	Southern Illinois University-Edwardsville	Washington University
Marymont University	Southern University and A&M University	Webster University
Maryville College	Southwest Baptist University	Westminster College
Maryville University	Southwestern Oklahoma State University	Westwood College of Technology
McKendree College	Spelman College	Wilberforce University
Memphis University	St. Louis Christian College	William Jewel College
Mercer University	St. Louis Community College- Florissant Valley	William Woods University
Mercy Hurst College	St. Louis Community College-Forest Park	Wittenberg University
Miami University-Ohio	St. Louis Community College-Meramec	Xavier University
Michigan State University	St. Mary College	Xenon International Beauty Academy
Michigan Technological University	St. Olaf College	
MidAmerica Nazarene University	St. Xavier University	
Middle Tennessee State University	Stephens College	
Milligan College	Stillman College	
Milliken University	Stoneybrook University	
Mississippi State University		
Missouri Baptist University		